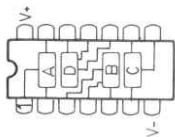
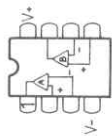


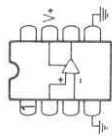
4136
QUAD OPAMP



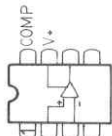
4016
COS/MOS
SWITCH



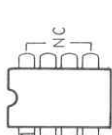
1458
DUAL OPAMP



380
AUDIO POWER AMP



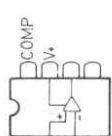
301
HIGH SPEED
OP AMP



5837
WHITE NOISE



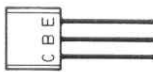
570
COMPANDOR



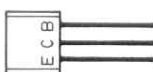
318
HIGH SPEED
OP AMP



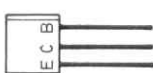
2N6254
NPN, 100 V, 150 W



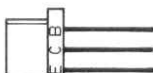
* **TP 251 B**
PNP, SMALL SIGNAL



2N5400
PNP, SMALL SIGNAL



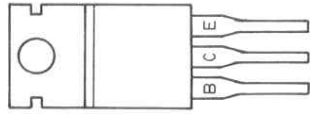
2N5500
NPN, SMALL SIGNAL



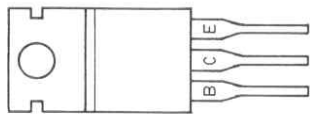
2N3391 A
NPN, LOW NOISE
SMALL SIGNAL



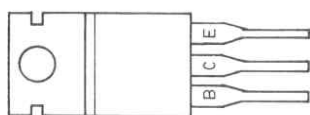
* **RCA1A10**
PNP, HIGH VOLTAGE
HIGH GAIN



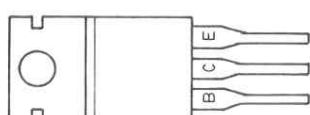
* **RCA1C12**
NPN, 40WATT



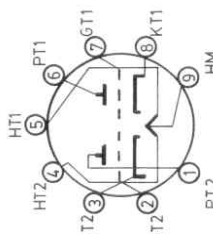
* **RCA1C13**
PNP, 40WATT



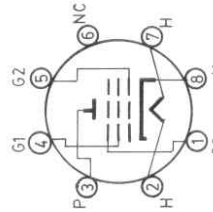
RCA1C03
NPN, 40WATT



RCA1C04
PNP, 40WATT



12AT7/ECC81
HIGH-MU, TWIN TRIODE



6CA7/EL34
POWER PENTODE

DIODES —▶

- * 1N 5392 100V, 1A
- 1N 4002 100V, 1A
- CR3-020 200V, 3A
- MR 502 200V, 3A
- MR 752 200V, 6A
- CR 100 1000V, 1A
- CBR25-020 200V, 25A BRIDGE

ZENER DIODES —▶

- * CZ24B 24V, 1W
- CZ15B 15V, 1W

L.E.D.'s

- MV 5022
- R 15054

RESISTORS —W—

EXCEPT WHERE NOTED, ALL RESISTORS ARE 1/4W, 5%, FILM. VALUES ARE LISTED IN OHMS.

CAPACITORS —|—

EXCEPT WHERE NOTED, ALL CAPACITORS ARE TANTALUM, ELEC. OR MYLAR FILM. VALUE ARE IN MFD. CURVED ELEMENT = LOWEST POTENTIAL.

DC VOLTAGES ±10%

REFERENCED TO GROUND, SIMPSON 464 DVM, 10M

AC VOLTAGES ±10%

REFERENCED TO GROUND, HP 400 H, 1M METER
GROUND LOOPS

IMPROPER GROUNDING CAN CAUSE HUM. FOLLOW ORIGINAL WIRING!

* USED IN EARLIER UNITS

| | | |
|-----------|-----------|-----------------|
| REVISIONS | DATE | CARVIN MUSIC CO |
| | 7-7-78 | |
| | DRAWN BY | SCHEMATIC NOTES |
| | W. Flauty | |