

**LSX1802**  
**Woofer Wiring**



**Rev A**  
**10/20/2008**

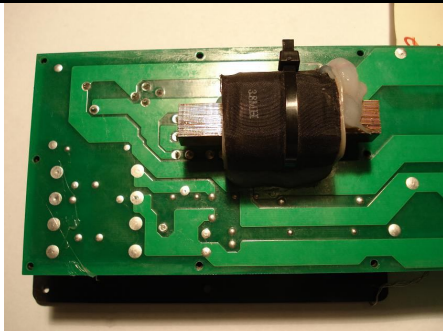
***CARVIN***  
**carvinservice.com**

Front of Crossover LSX1802

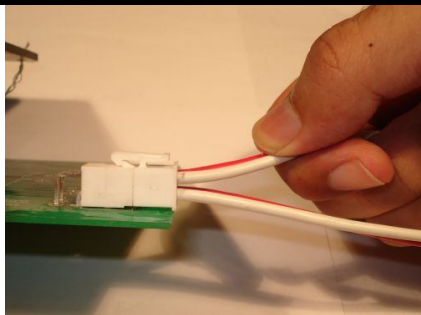


LSX1802 Passive Crossover

Behind Jack plate



Connect to Woofer (1)



Red (+)  
White (-)

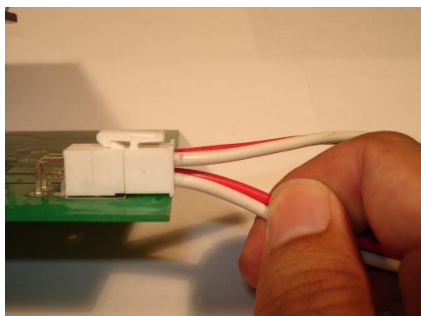


Red and White to Woofer



PS18-8

Connect to Woofer (2)



Red (+)  
White (-)  
PS18-8



Red and White to Woofer



PS18-8

I am holding the wires in my hand to make it easier for you to see which wire to connect to the speaker.